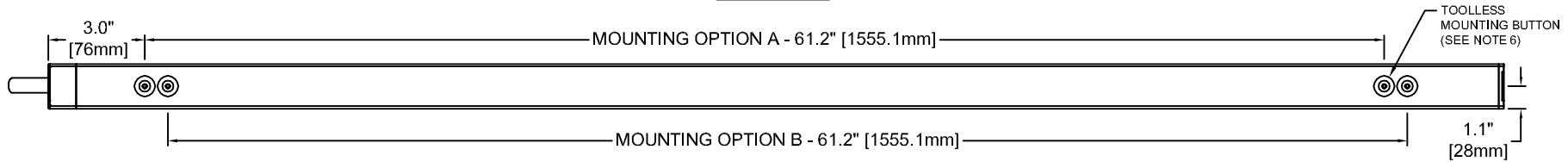
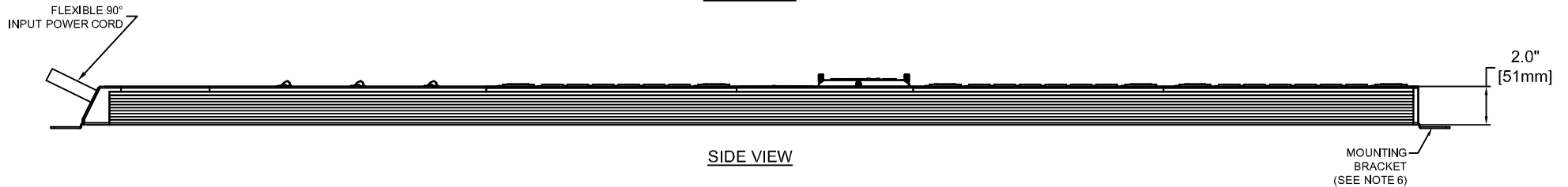


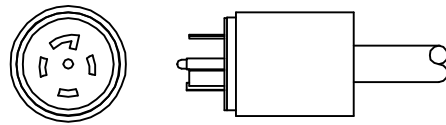
FRONT VIEW



REAR VIEW



SIDE VIEW



L21-30P  
(3P/5W, 30A, 120/208V)

**AGENCY COMPLIANCE:**

UL 60950-1 (2ND EDITION) + AMENDMENT 1:2009, CSA C22.2 NO. 60950-1-07 (2ND EDITION) + AMENDMENT 1:2009, IECCE CB FULL CERTIFICATION SCHEME (CB-FCS)  
FCC PART 15, CLASS A, INDUSTRIAL  
ROHS COMPLIANT (REDUCTION OF HAZARDOUS SUBSTANCES)  
WEEE COMPLIANT (WASTE OF ELECTRICAL AND ELECTRONIC EQUIPMENT)

**ENVIRONMENTAL:**

OPERATING: 41° F-140° F (5° C-60° C) NON-CONDENSING, NON-CORROSIVE,  
10% - 90% RH  
STORAGE TEMPERATURE: -4° F-185° F (-20° C - 85° C)

**NOTES:**

1. UNIT DIMENSIONS: 68.4" [1737mm] H x 2.4" (61mm) D x 2.2" (56mm) W
2. UNIT WEIGHT: 16.5lbs (7.5kg)
3. SHIPPING DIMENSIONS: 72.2" (1962mm) H x 10.7" [273mm] D x 6.2" [159mm] W
4. SHIPPING WEIGHT: 18.5lbs (8.4kg)
5. ALL WIRING IS TO BE IN COMPLIANCE WITH NATIONAL AND LOCAL ELECTRIC CODES.
6. (2) MOUNTING BUTTONS AND (2) MOUNTING BRACKETS SUPPLIED WITH EACH UNIT. EITHER OPTION CAN BE USED TO MOUNT THE PDU.

METERING PARAMETER	MEASUREMENT ACCURACY
VOLTAGE	±1% + 0.1 VAC
CURRENT	±1.5% + 0.01A FROM 1% TO 10% OF UNIT RATING; ±1% FROM >10% TO 125% OF UNIT RATING

**INPUT POWER**

INPUT CORD	INPUT PLUG	WIRE COUNT	PHASE	VOLTAGE (VAC)	RATED AMPS	MAX. CONT. AMPS
10 FT/3.0M	L21-30P	L + L + L + N + PE	3	120/208V	30	24

**OUTPUT POWER**

BRANCH	RECEPTACLE TYPE (QUANTITY)	NOMINAL VOLTAGE (VAC)	MAX. CONTINUOUS AMPS	
			PER RECEPTACLE	PER BRANCH
A	(6) IEC-C13 / (2) IEC-C19	208V	12/16	16
B	(6) IEC-C13 / (2) IEC-C19	208V	12/16	16
C	(6) IEC-C13 / (2) IEC-C19	208V	12/16	16

DRAWN BY K. STACY	SHEET NO. 1 OF 1
CHK BY S. KALAPOS	ECN NO.
REF. DWG.	ORDER NO.

MPH2 MANAGED RACK PDU  
OUTLET METERED AND OUTLET SWITCHED  
MPHR1123

DWG. NO. MPHR1123	DATE 10/10/14	REV. # 1	1050 DEARBORN DRIVE P.O. BOX 29186 COLUMBUS, OHIO 43229
----------------------	------------------	-------------	---

